

# Bennington Park West



- Bennington schools
- Brand new development
- Close to shopping, restaurants, etc.
- Many treed lots
- Buildable October 2018

Contact:  
Steve Faller: 402.670.4821  
stevefaller@buildalandmark.com

or

Jana Faller, phone: 402.672.5550  
email: Jana@synergyomaha.com

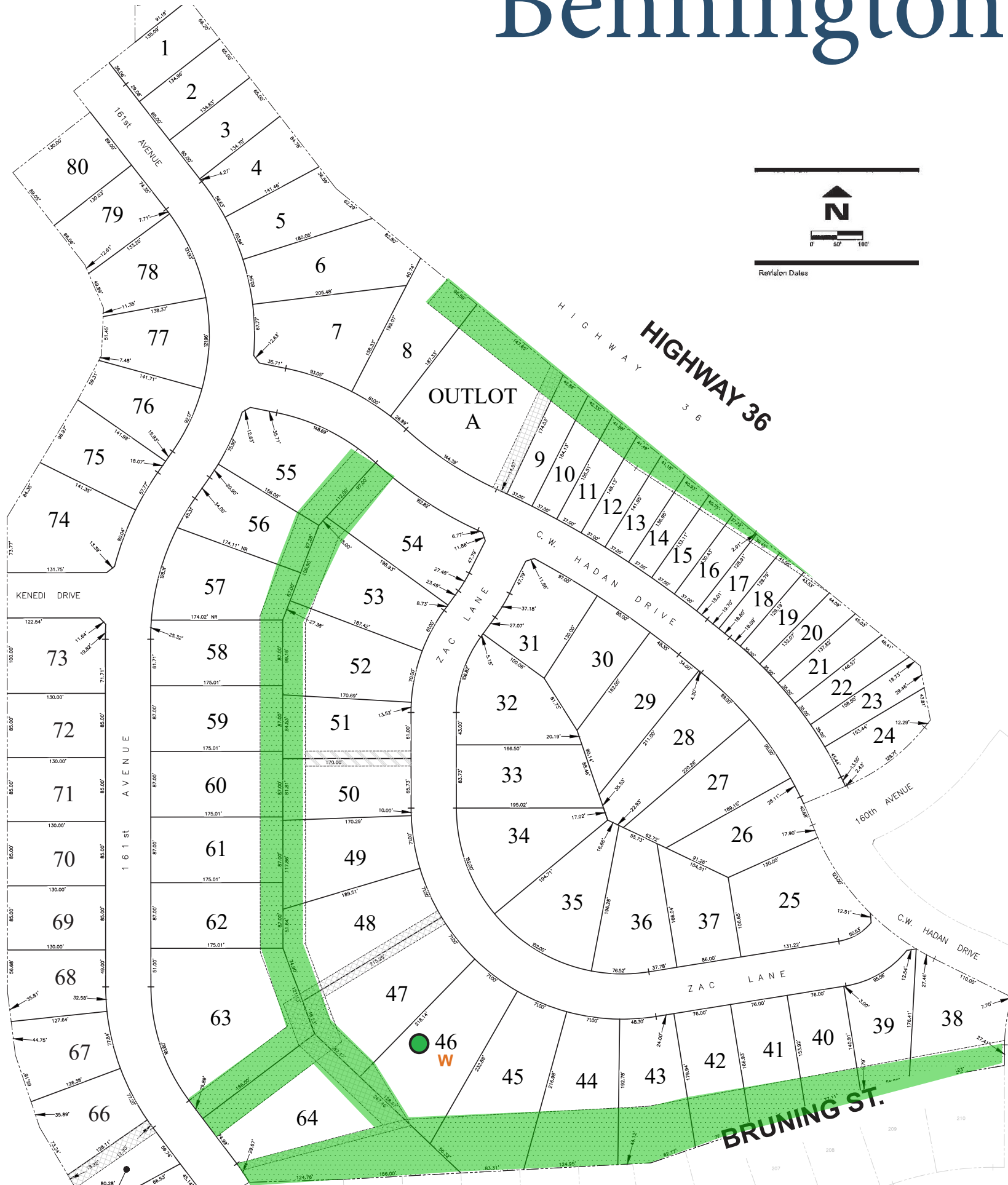
[www.buildalandmark.com](http://www.buildalandmark.com)

### Setback

25' front/rear  
7' side

● LANDMARK LOTS

Lot # Price\*  
46 \$75,000 W - TREES



PART OF THE EAST 1/2 OF THE NW 1/4 OF SECTION 10-16-11