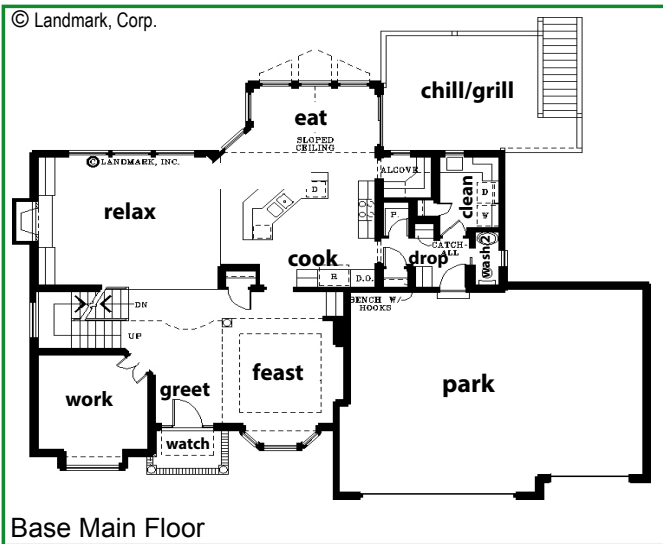


Landmark Performance Home's

THE HAZELTINE

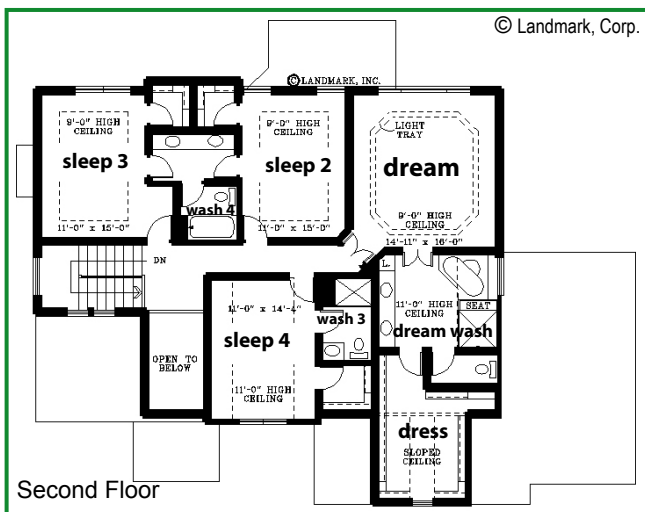


PLAN FEATURES:

- Desk alcove
- Butler pantry
- Built-in cabinets
- 4 "sleep" with walk-ins
- 9 ft. ceilings with open "greet"
- 4 "wash" including Jack and Jill "wash"
- Two-story plan with a U-shaped staircase

OPTIONAL FEATURES:

- Upper level "clean"
- Larger "dream wash"
- Add bay window to feast
- Add "work" area in upper hall
- Many plan and elevation options available



Steve Faller, phone: 402.670.4821
email: stevefaller@buildalandmark.com



Jana Faller, phone: 402.672.5550
email: Jana@synergyomaha.com

