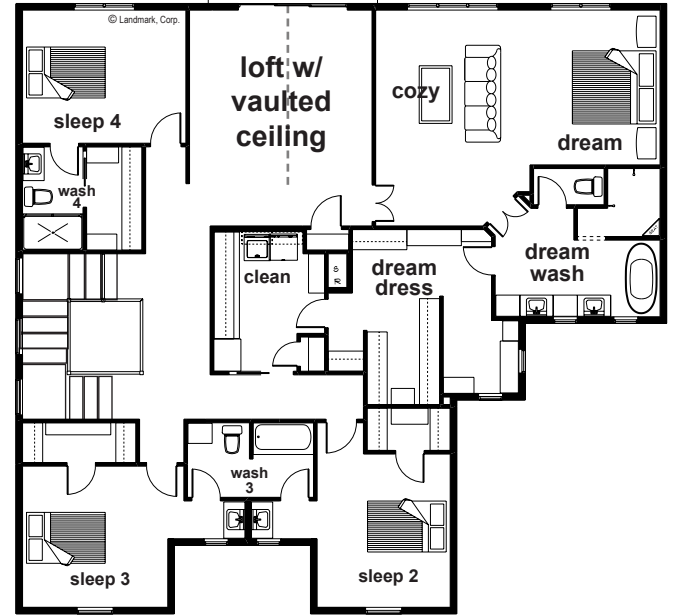
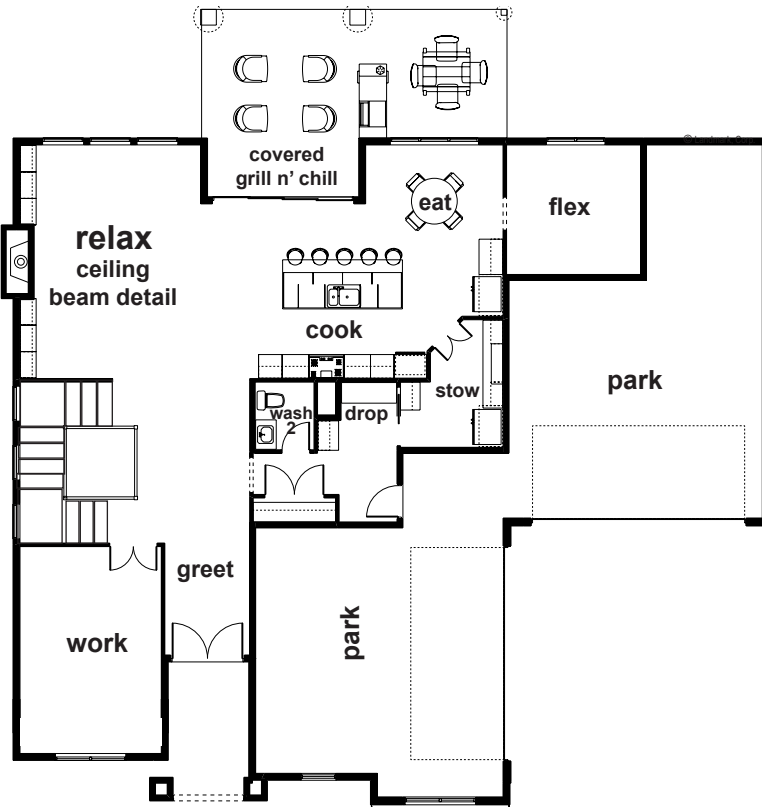


Landmark Performance Homes

STREET OF DREAMS 2018



PLAN FEATURES:

- Open, unique 2-story plan
- 4-car, side-load garage
- Dramatic double-door entry & foyer area
- One-of-a-kind, 3-story staircase
- Great outdoor living, large covered deck w/ grill area
- 5 bedrooms plus upstairs loft area
- Master suite with sitting area and a huge walk-in closet
- Kitchen with large walk-in pantry, 10' island, plus eating area
- Ask about incentives and discounts for Street of Dreams
- Drop area w/ built-in bench, hooks & cubby
- WINNER of 3 Street of Dreams awards