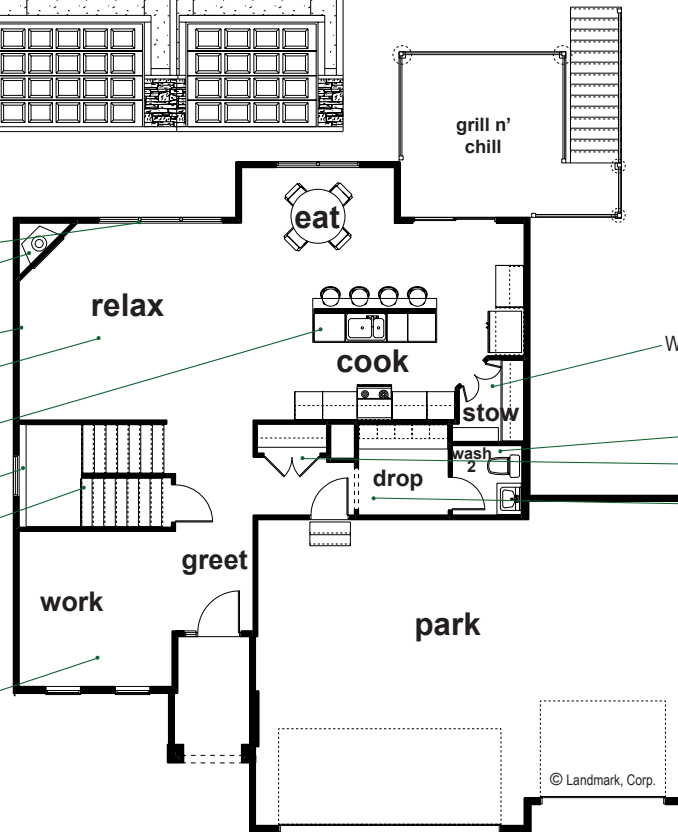


THE NEWMARK PLAN

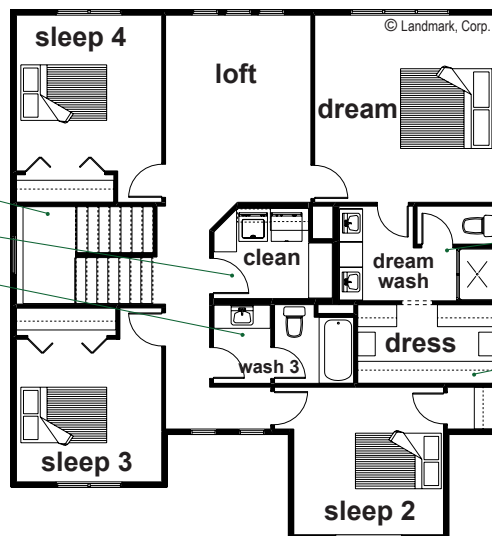


- Large windows set at 8' for tons of light
- Cozy fireplace w/ gas burning log (corner or center placement)
- T.V. wall or above fireplace
- Open "cook/eat/relax" areas great for entertaining
- kitchen island, one level
- Window adds light in stairway
- U-shape staircase w/ landing
- Use for office, dining or guest room



- Walk-in pantry
- Separate powder bath
- Coat closet off drop area
- Easy-access "drop" zone w/ built-in bench, hooks, & cubbys

- Bright walkway & windows
- Clean w/ counter
- Compartmentalize wash



- Dream wash
- Large walk-in closet



Steve Faller: 402.670.4821
 stevefaller@builddlandmark.com



Jana Faller Cell: 402.672.5550
 Broker/Realtor Jana@synergyomaha.com