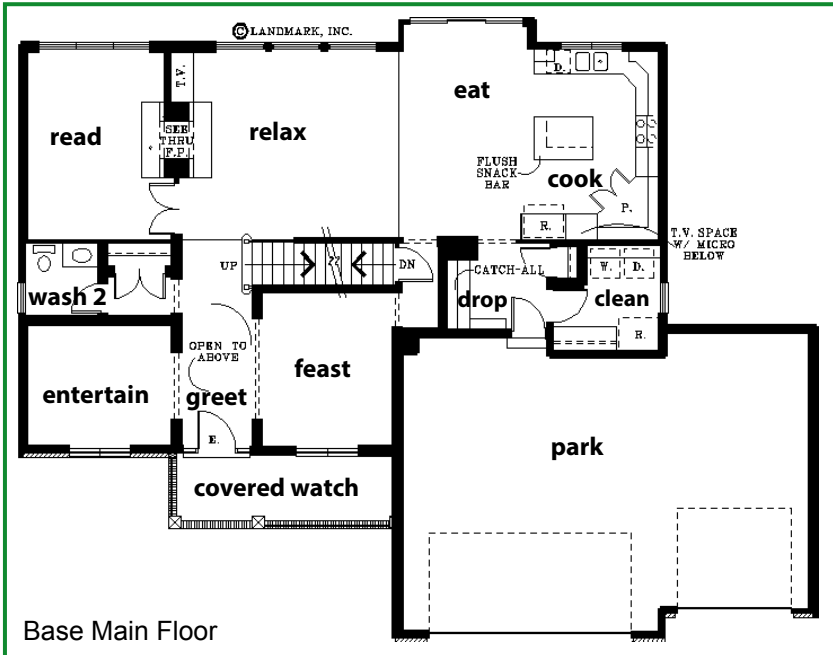


# Landmark Performance Home's **THE AUGUSTA**

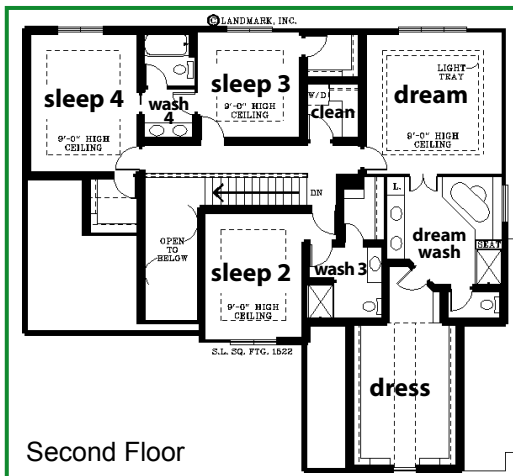


## PLAN FEATURES:

- 4 "sleep"; 4 "wash"
- Large "dream" suite
- Double-sided fireplace
- Jack and Jill "wash"
- Upper "clean" with convenient cabinets
- Large covered "watch"

## OPTIONAL FEATURES:

- Wet bar in basement
- Many elevation choices
- "Park" on left or side-load "park"
- Add square footage or option to realize your vision



Steve Faller, phone: 402.670.4821  
email: stevefaller@buildalandmark.com



Jana Faller, phone: 402.672.5550  
email: Jana@synergyomaha.com

