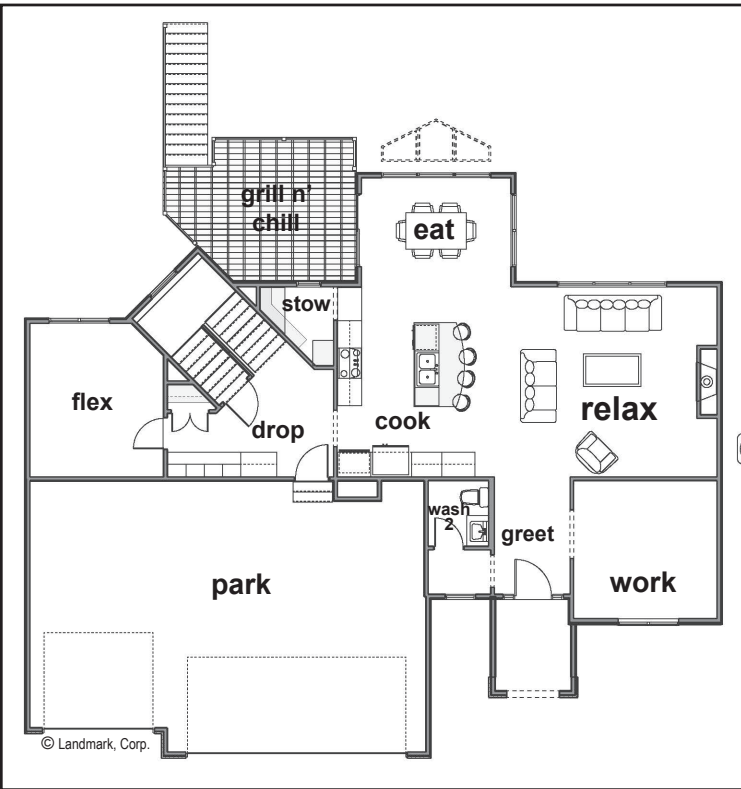


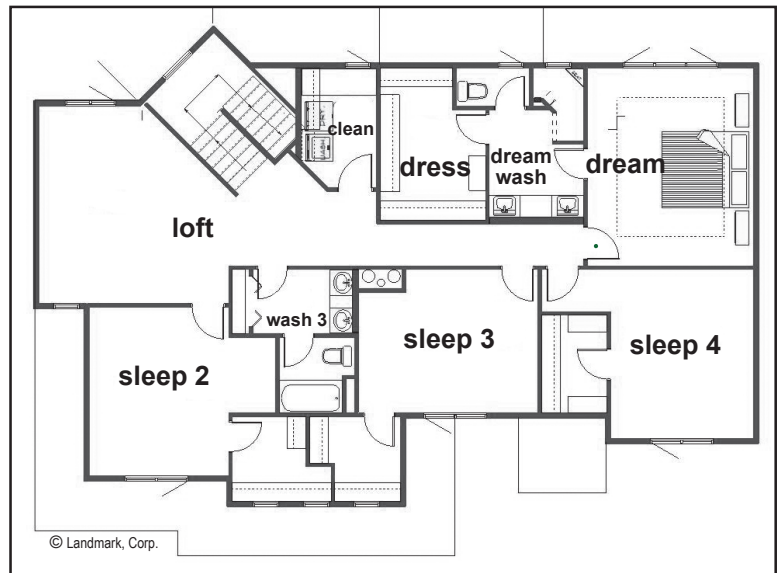
Landmark Performance Home's

THE WYNDHAM



PLAN FEATURES:

- Staircase in the back of the home
- Large loft area
- "Drop" area
- 4 "sleep"; 3 "wash"
- Open, "cook/eat/relax" areas
- Den off entry, flex room off kitchen
- Spacious plan with many options to customize



Steve Faller: 402.670.4821
stevefaller@builddlandmark.com



Jana Faller Cell: 402.672.5550
Broker/Realtor Jana@synergyomaha.com