

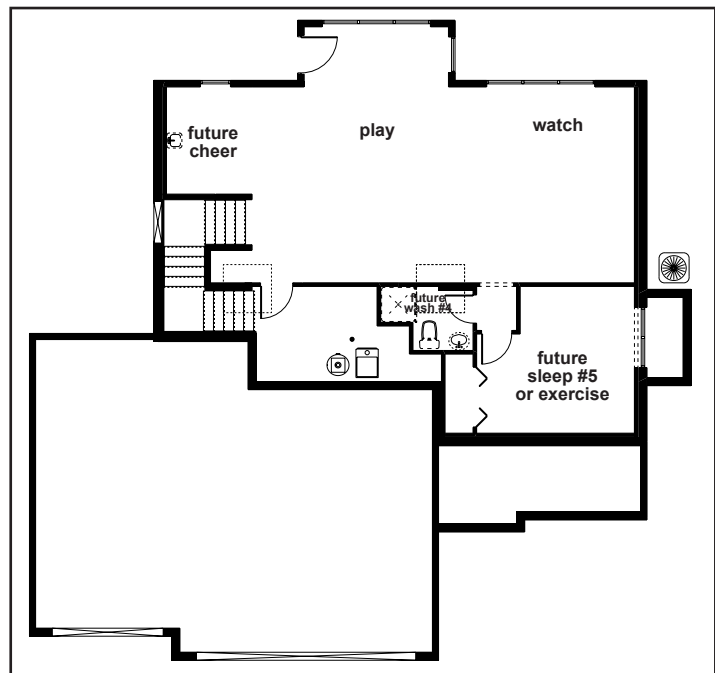
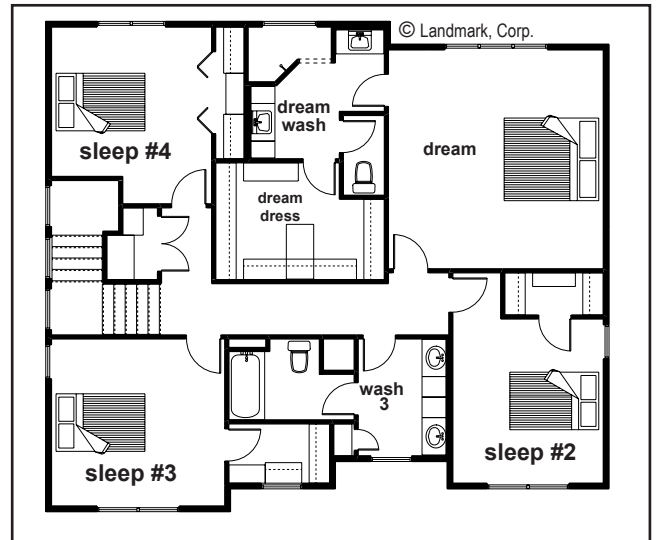
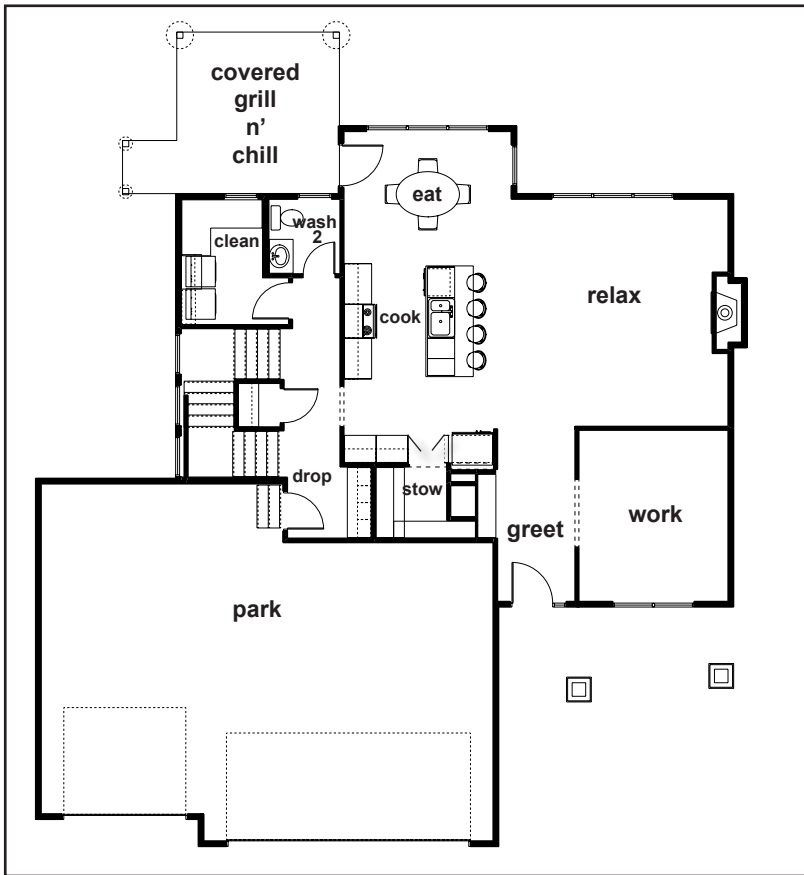
# Landmark Performance Homes

## THE AVALON



### PLAN FEATURES:

- 4 "sleep," 3 "wash"
- Large walk-in pantry
- Vaulted ceiling in "dream"
- Bright, open plan with large deck
- "Drop" area off of garage
- Many options to customize
- Finished basement w/ room to expand



Steve Faller, phone: 402.670.4821  
email: stevefaller@buildalandmark.com



Jana Faller, phone: 402.672.5550  
email: Jana@synergyomaha.com



www.buildalandmark.com